



NORTH AMERICAN STEEL

INNOVATIVE STORAGE SOLUTIONS



**ENGINEERED FOR
STRENGTH
FOCUSED ON
SERVICE**



DRIVE-IN RACK

DRIVE-IN

DRIVE-IN/ DRIVE-THRU Pallet Racking Systems are designed for loading and retrieving full pallets from the same bay. This system is best suited for high volumes of the same SKU's per bay, providing dense storage.

DRIVE-IN Systems are an excellent solution for product that is not time/date sensitive (FILO system, First-In Last-Out).

DRIVE-THRU Systems are used when accessibility from both ends of the bay are required (FIFO system, First-In First-Out). Ideal for time/date sensitive products.

Pallets are stored on Rails that run the full length of the rack, generally spanning from two to twelve pallets.

Features & Benefits

- › Available in Rollformed, Structural and Hybrid rack options
- › No specialty lift truck equipment required
- › Optimum utilization of building space
- › Cantilever entry frame options to minimize lift truck damage
- › Flared Entry Rail options for easier pallet entry
- › Specialty NAS Rub Rails for vehicle guidance and ease of operation
- › Modular design to accommodate future storage additions
- › Push-Back integration available on upper levels
- › We custom design each system to maximize storage capacity



COMPONENTS

Load Rails

Load Rails support the pallet being stored and act as pallet guides while loading and removing pallets. Our unique slim design saves vertical space which allows for accommodation of larger skids. NAS utilizes only structural steel angle for Load Rails for their proven durability in the harshest storage environments. Available in 3" or 4" sizes based on required capacity and channel options for heavy duty applications.

Flared Entry Load Rail Options

The aisle side of the load rail is the critical interface when using a Drive-In system. Rails can be supplied with square ends when aisle space is at a premium. Mitred angle Flared Entry options are available to help guide pallets into proper position on the Load Rail.

Top Tie Beam (Rollform or Structural)

Load Rail

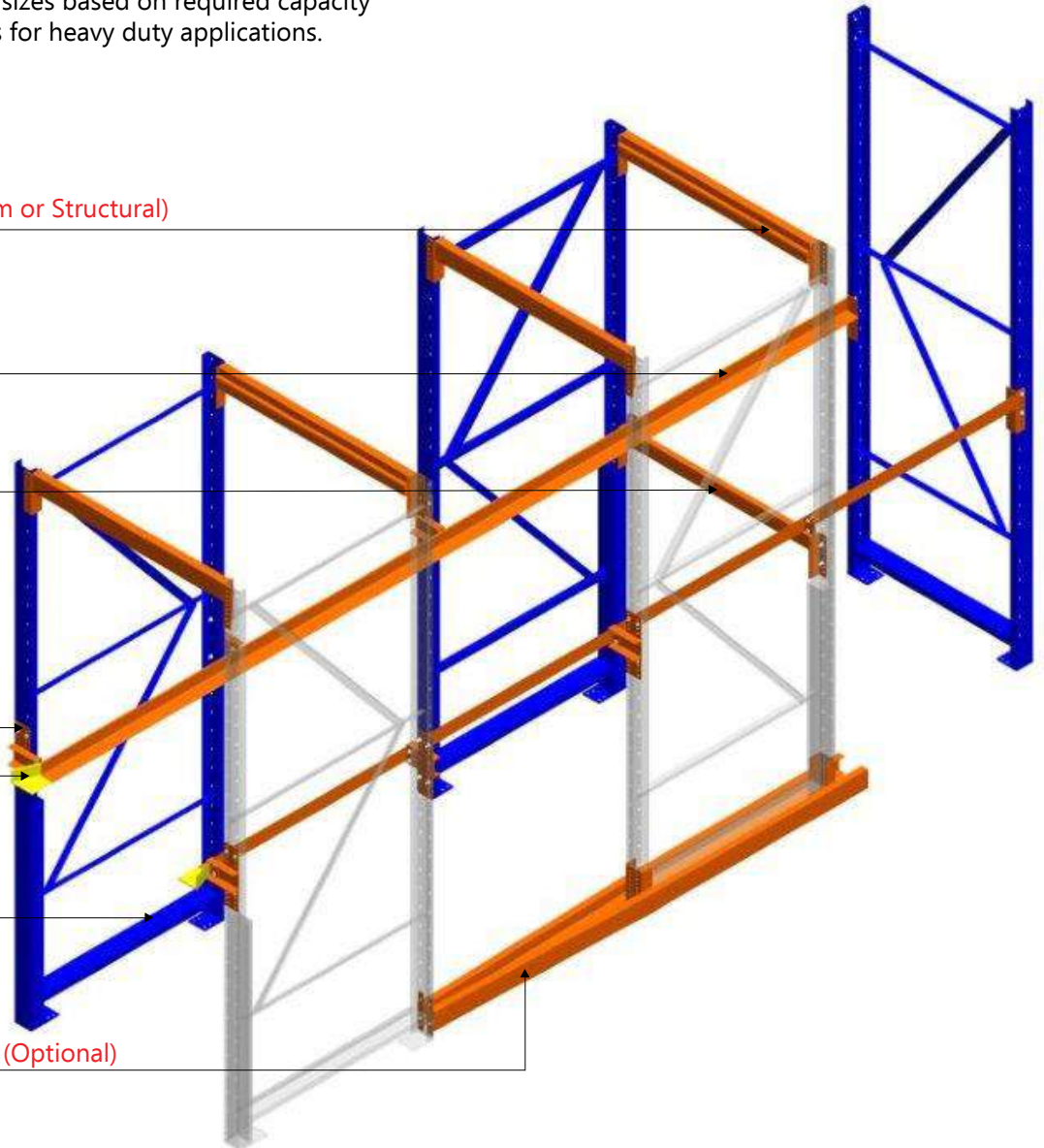
Rail Support Beam

Stub Arm

Flared Entry Rail

Channel Rub Rail

Bent Channel Rub Rail (Optional)



Stub Arm

Drive-In Stub Arms provide a rigid moment connection between each column and load rail. The Stub Arms are available in different lengths to accommodate product overhang and required lift equipment mast width. End of row frames utilize Left Hand or Right Hand single sided Stub Arms. Internal frames require two sided or common Stub Arms.

Channel Rub Rails

For Drive-In systems, NAS offers 2 primary types of Channel Rub Rails: 1-piece frame mounted channel rails; or individual rails bolted in between the Drive-In frames. Both styles are installed just above the floor and prevent floor stored pallets from damaging the frame columns and anchors, while ensuring that pallets are safely guided in and out of the system.

APPLICATIONS

Food Industry

Drive-In / Drive-Thru Rack is ideal for storage of large volumes of either identical SKU's or seasonal inventory.

Tall, or bulky items that are palletized for retail distribution are typically limited to stacking 2 or 3 units high on the floor. These SKU's can be stored in a Drive-In Rack system to utilize all available ceiling height, typically 4 to 6 pallets high and reclaim floor space.

Special Paint Finish:
Acid/corrosion resistant food grade approved paint is also available in optional colour choices.



Cold Storage

Cold storage facilities require the highest storage density and operational efficiency, due to the significant operating costs per square foot.

Drive-In Systems are ideal for maximized storage density within the coolers / freezers.

Our Engineers will optimize your space utilization to accommodate the highest number of pallet positions, combining ease of access to product, while minimizing door openings and air exchange.

Our protective coatings and top quality products are designed to withstand the temperatures and humidity in these extreme environments.

APPLICATIONS



Manufacturing Industry

Drive-In Systems are well suited for Raw Material, Work-In -Process applications and Finished Goods storage when skid volume per SKU is high.

The front entry frames of systems can be double posted providing greater impact resistance. The entire system can also be Double Posted resulting in more than double the load capacity.

Paint Finish: Our Drive-In/Thru racking is finished with an environmentally friendly powder coat paint over a cleaned and phosphate etched surface, then oven baked at the correct temperature/time ratio to produce a durable scratch resistant finish.

Roof Supported

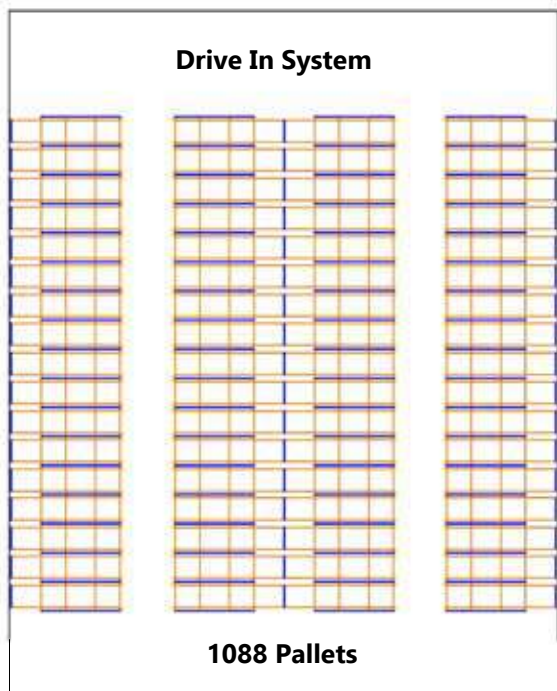
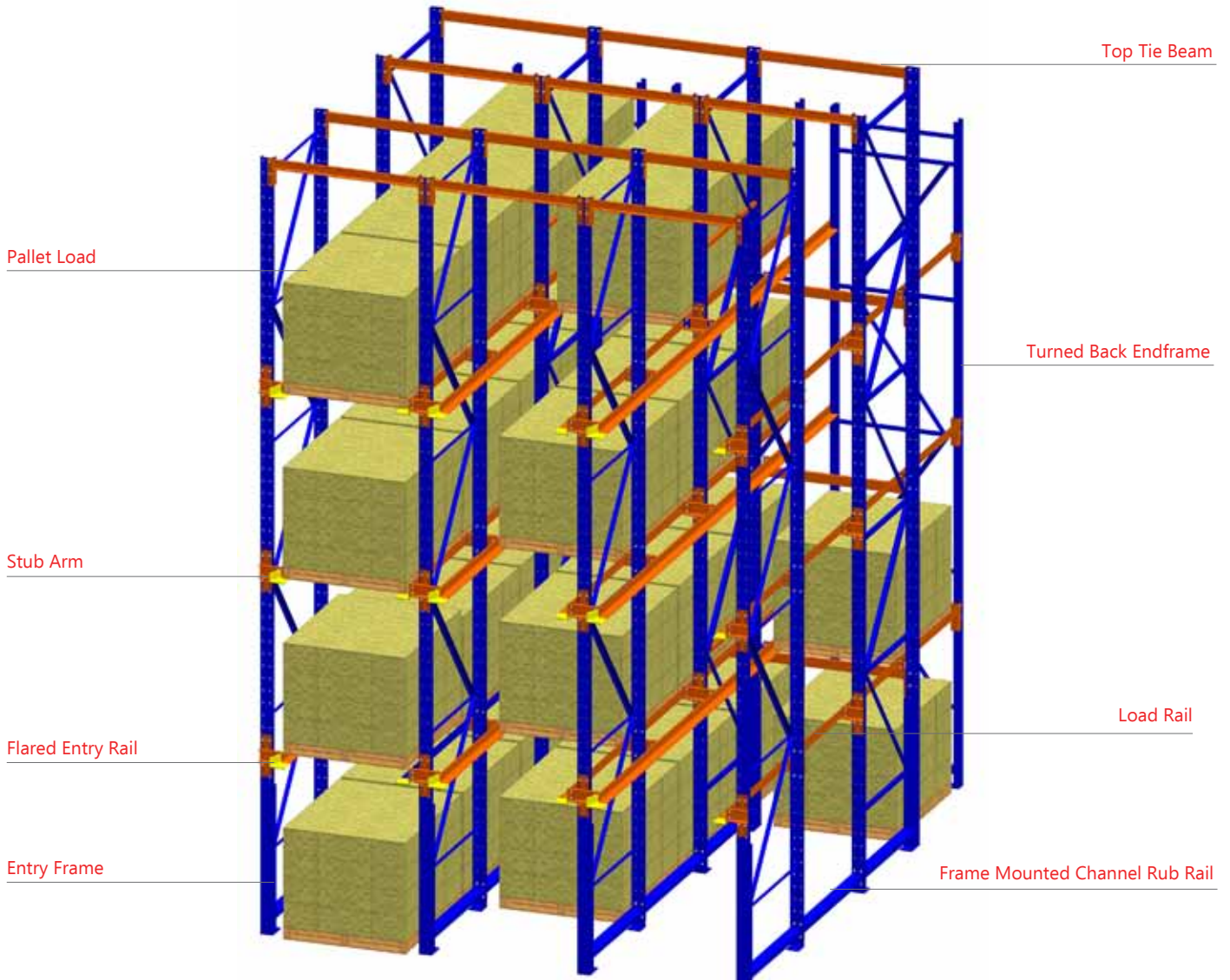
If storage density is a primary consideration and the product stored is consistent, Drive-In Rack supported buildings offer an excellent solution.

These building systems exceed the space utilization of traditional steel frame construction, by eliminating building columns and trusses.

By removing these obstructions, higher storage density and lower building costs are achieved.

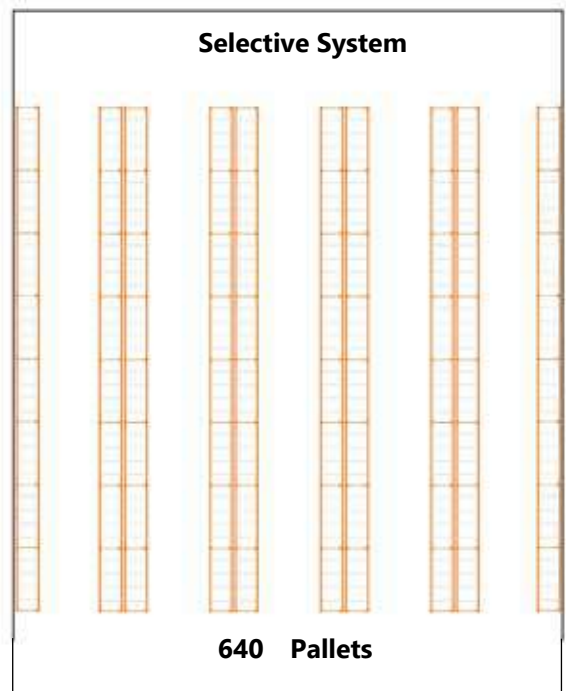


ASSEMBLY



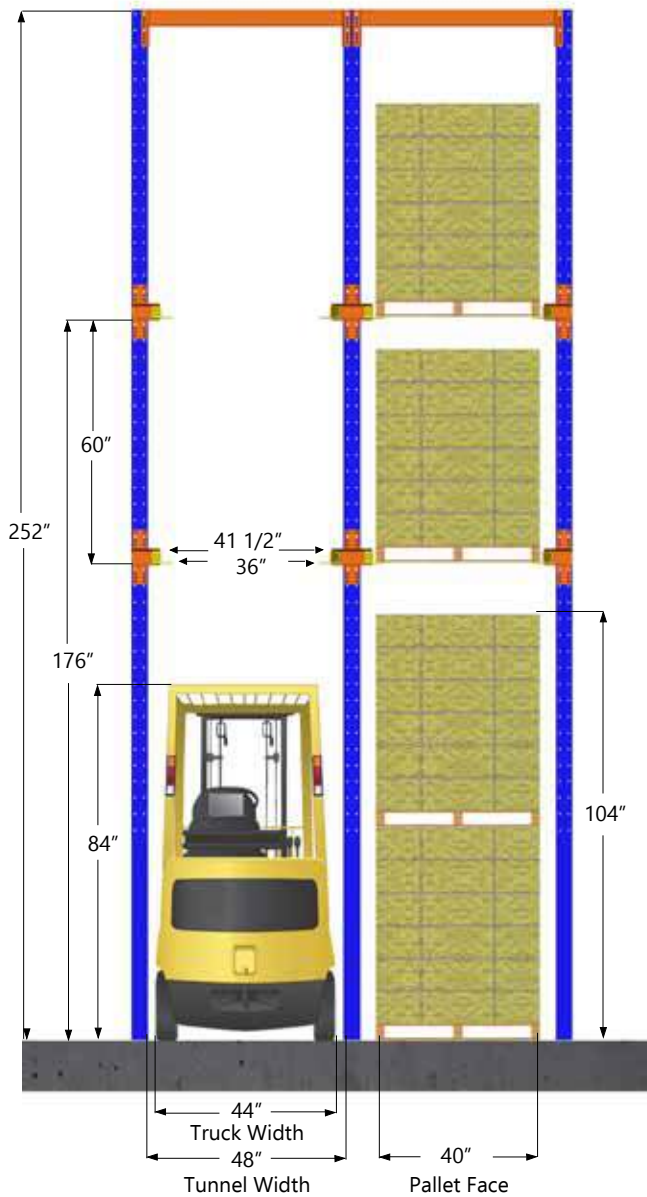
Drive-In rack systems reduce pick face locations in exchange for additional locations of a single SKU.

Deeper pallet storage of each pick location optimizing density of the available space over a comparable Selective System.

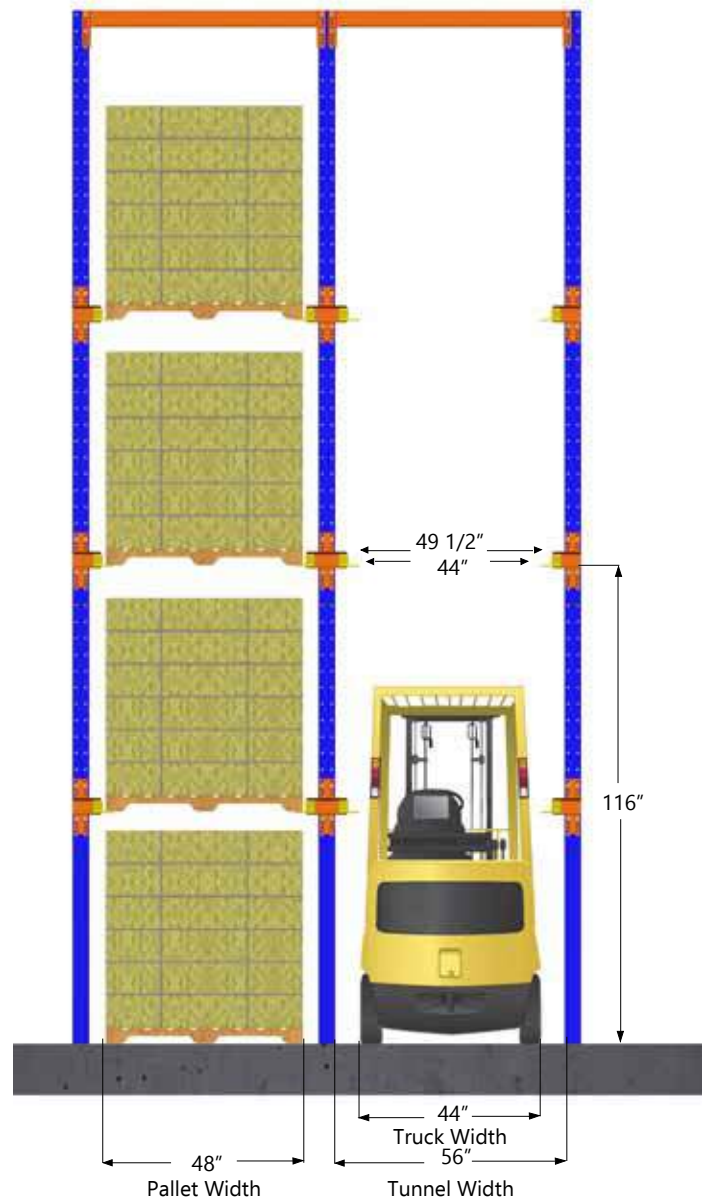




40" Face Pallet



48" Face Pallet



Many palletized loads are transported by road or rail stacked 2 high. This characteristic is often utilized in Drive-In systems for the floor location, to gain valuable vertical space.

In addition, operators have more lateral space for lift truck navigation by eliminating a rail and therefore raising the first rail level above the operator cage. Drive-In Systems can also be configured to support pallet loading from any side of a 4 way pallet.

Contact your local NAS Technical Representative to determine the best configuration for your operation.

Other Catalogues

 **Proudly Canadian**



ROLLFORMED RACK



STRUCTURAL RACK



CANTILEVER RACK

Advanced Production Methods

**HIGH SPEED
ROLLFORMING LINES**



**ROBOTIC
WELDING**



POWDER COATED FINISH

All NAS products use environmentally friendly powder coatings with a durable scratch resistant finish.

Installations & Services

**TAKE ADVANTAGE OF OUR EXPERIENCED
ENGINEERING TEAM**

to assist you in planning and designing your Storage Systems.

OUR PROFESSIONAL INSTALLATION CREWS can handle all of your racking and shelving installations, repairs and maintenance. Union and non-union crews available.

MULTIPLE MANUFACTURING PLANTS strategically located across the country providing improved service and reduced freight costs.

Certifications



Warranty

All materials are guaranteed to be free from defects in workmanship and material.

Extended Warranties vary depending on products.

Installation Warranty applies to all racking installed by our certified installation crews.

NORTH AMERICAN STEEL

300 Hopkins Street, Whitby, Ontario Canada L1N 2B9
Phone: (905) 668-3300
Toll Free: (800) 735-4153 Email: sales@naseco.ca
Fax: (905) 668-5477 Web: www.naseco.ca

NORTH AMERICAN STORAGE

2103 - 7th Street, Nisku, Alberta Canada T9E 7Y3
Phone: (780) 955-2444
Toll Free: (800) 241-8968 Email: sales@naseco.com
Fax: (780) 955-3463 Web: www.naseco.com

With 60 Years

Manufacturing Experience

NORTH AMERICAN STEEL

is the leading name for

Innovative Storage Concepts